

Xirrus Wi-Fi Monitor Widget for Windows XP Guide

Version 1.0 April 9, 2008

Description

The Xirrus Wi-Fi Monitor for XP is a free Yahoo! Widget utility for Windows XP systems. Widgets are simple, mini-applications that run on the XP desktop and provide easy access to commonly used information and tools. The Xirrus Wi-Fi Monitor widget provides at-a-glance access to information about all available Wi-Fi networks and your current Wi-Fi connections. It provides a useful tool for anyone deploying and operating Wi-Fi.

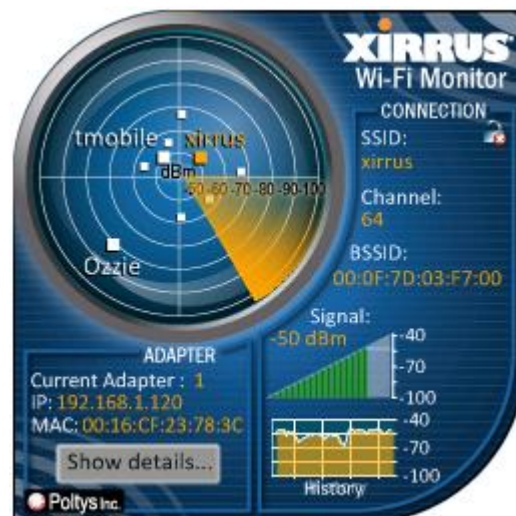
Applications

The Wi-Fi Monitor widget can be used for a number of practical applications, including:

- Search for local Wi-Fi networks
- Display laptop wireless settings
- Verify Wi-Fi coverage (simple site survey)
- Verify AP settings
- Detect rogue APs
- Locate Wi-Fi devices
- Aim Wi-Fi antennas

Features

- Graphical radar display of all Wi-Fi networks in range and relative distance
- Detailed information on all Wi-Fi networks in range from flyout table
- Display of current Wi-Fi adapter IP and MAC addresses
- Current connection signal strength with 5 minute history
- Support for multiple adapters
- 9 different color skins
- Summary view when docked, expanded view on desktop



Installation

1. The Xirrus Wi-Fi Monitor XP widget requires installation of the Yahoo! Widgets framework. This framework can be downloaded and installed from the Yahoo! Widgets web site at <http://widgets.yahoo.com/download/> by clicking on “Get Started Now”.
2. Download the Xirrus widget from the Yahoo! Widgets web site at <http://widgets.yahoo.com/> and searching for Xirrus, or from the Wi-Fi Tools section of the Xirrus web site at <http://www.xirrus.com/library/wifitools.php>.
3. Uninstall any previous versions of the widget by right clicking on the widget graphic in the dock (the widget must be running), then selecting “Delete Widget”.
4. Double click on the .widget file to install.
5. Select “Use Widget” on the installation dialog that appears.
6. The widget will install directly into the dock panel on your Windows XP desktop.

Operation

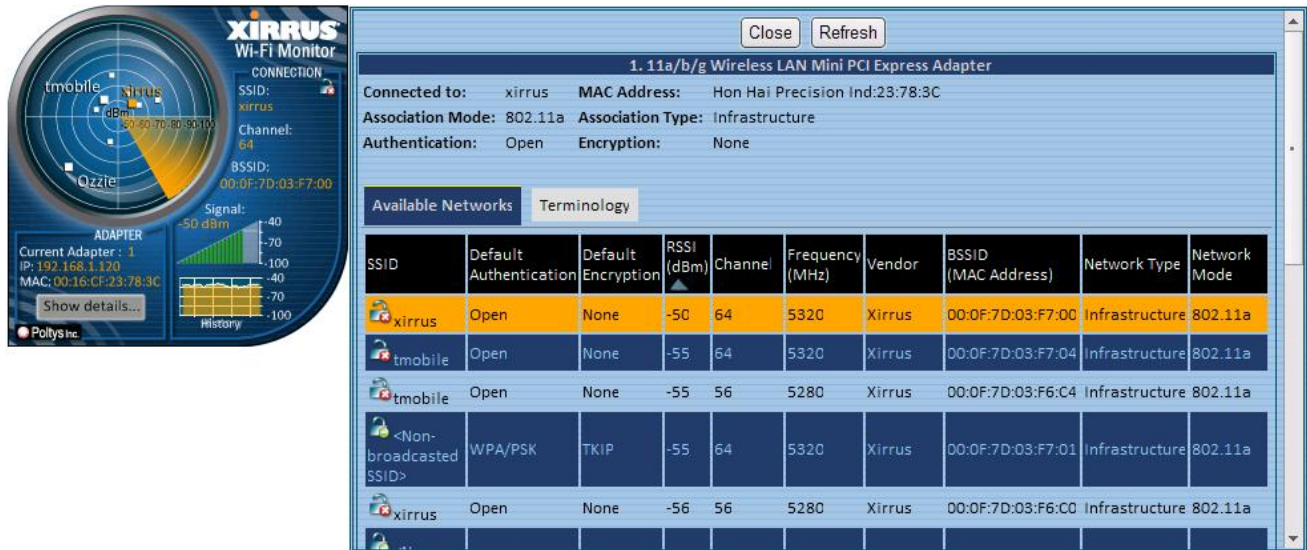
1. Dock: When on the Yahoo! Widgets dock, the widget displays the name of the currently connected Wi-Fi Network (SSID) and signal level.



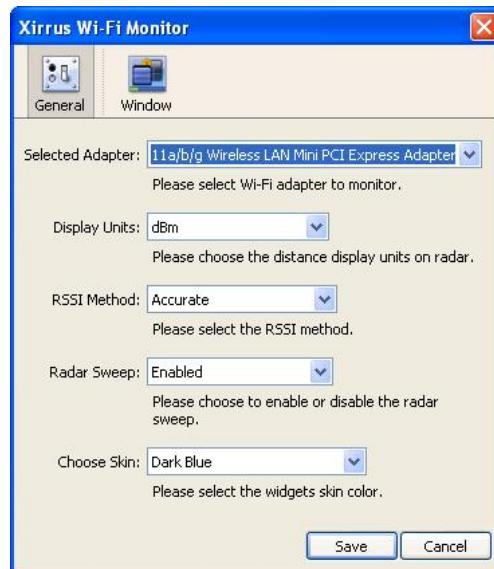
2. Desktop: Single click on the widget from the dock to open the full widget. The widget face will open to its expanded view with an active radar-like display of available Wi-Fi networks, plus details about your current connection and adapter. Information on the widget face is divided into Adapter and Connection sections.



3. **Fly Out:** In expanded view, selecting “Show Details” opens a side flyout window. More detailed information about your adapter is displayed at top. A table of available Wi-Fi networks is listed below with the currently connected network (SSID) highlighted in orange. The Terminology tab provides definitions for Wi-Fi terms used in the widget.



4. **Preferences:** To change widget settings, right click on the widget face when it is in expanded mode, and select “Widget Preferences”. Available settings include:
 - Selected Adapter: Choose the Wi-Fi adapter to display information from when more than one adapter is present
 - Display Units: Select units to display signal strength (RSSI), either % or dBm. A 0% signal corresponds to -100dBm. A 100% signal corresponds to -50dBm or greater.
 - RSSI Method: Select either Accurate or Classic method. The Accurate method is the default and best indication of current signal strength.
 - Radar Sweep: Enable or Disable the radar sweep on the main widget face.
 - Choose Skin: Select from 9 different skin options.



Tips

1. Click column headers on columns in the fly out window to sort by that item when there are a lot of networks.
2. Ad Hoc networks (a potential security threat) are indicated by the Network Type column in the Available Networks table on the fly out. This column displays APs as “Infrastructure” and Ad Hocs as “Ad Hocs”.
3. Click on the adapter name in the fly out window to expand/contract the view of its information.
4. Make sure the desired Wi-Fi adapter is selected from the Settings window if more than one are present in the system.

Known Issues

Following are known issues with the 1.0 version of the Xirrus Wi-Fi Monitor widget:

1. In some cases, the widget may not correctly connect to your Wi-Fi adapter and display information. In this case, try disabling/enabling your Wi-Fi adapter, then reinstalling the widget.

Updates

The Xirrus Wi-Fi Monitor widget may be updated periodically with new features and fixes. The latest widget versions are posted for free download from:

1. Xirrus website, Wi-Fi Tools page: <http://www.xirrus.com/library/wifitools.php>
2. Yahoo! Widgets site: <http://widgets.yahoo.com/> and search for “Xirrus”

Support/Feedback

The Wi-Fi Monitor widget is a free tool and does not come with a guarantee of support. However, inquiries and feedback about our widgets can be made by sending an email to widget@xirrus.com.

Also Available

The Xirrus Wi-Fi Monitor XP widget is also available as a Windows Vista gadget, and will be available soon for the Apple Mac and Linux operating systems. Check the Xirrus web site for the latest available widgets and gadgets: <http://www.xirrus.com/library/wifitools.php>