

## Xirrus Wi-Fi Monitor Widget for Windows XP Guide

Version 1.1

June 23, 2008

### Description

The Xirrus Wi-Fi Monitor for XP is a powerful, free Yahoo! Widget Wi-Fi utility for Windows XP. Widgets are simple, mini-applications that run on the desktop and provide easy access to commonly used information and tools. The Xirrus Wi-Fi Monitor widget provides at-a-glance information about available Wi-Fi networks plus details about each network and connection. It provides a useful tool for anyone deploying and operating Wi-Fi.

### Applications

The Wi-Fi Monitor widget can be used for a number of practical applications, including:

- Search for local Wi-Fi networks
- Display laptop wireless settings
- Verify Wi-Fi coverage (simple site survey)
- Locate Wi-Fi devices
- Detect rogue APs
- Verify AP settings
- Aim Wi-Fi antennas
- Education on Wi-Fi

### Features

- At-a-glance radar-like view of available Wi-Fi networks and their relative distance
- Real-time display of current Wi-Fi connection signal strength with 5 minute history
- Locate mode with signal strength tracking and audible beep for locating Wi-Fi networks
- Display of Wi-Fi adapter IP and MAC addresses
- Details on available Wi-Fi networks – SSID, channel, security, type, etc.
- Support for multiple adapters
- Summary view when docked, expanded view on desktop
- 9 different color skins



## What's New

New in the 1.1 release (June 23, 2008):

1. High speed 802.11n Wi-Fi network support
2. Locate mode for finding Wi-Fi devices with signal graph and audible beep
3. Connect/Disconnect button on flyout window to connect to a Wi-Fi network
4. Enable/Disable Adapter button on flyout window to turn Wi-Fi on/off
5. Color coded graphical RSSI indicator per SSID on flyout window
6. Adjustable polling interval
7. Sonar animation on radar window
8. Updated Glossary of Wi-Fi technology

## Installation

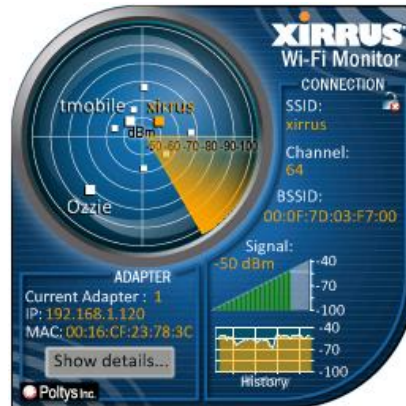
1. The Xirrus Wi-Fi Monitor widget requires the Microsoft .NET 2.0 framework to operate. Check if this framework is installed by going to Control Panel – Add/Remove Programs and looking for Microsoft .NET 2.0. If it is not present, download and install from: <http://www.microsoft.com/downloads/details.aspx?FamilyID=0856eacb-4362-4b0d-8edd-aab15c5e04f5&displaylang=en>
2. Install the Yahoo! Widgets framework if it is not already present on your system. The framework can be downloaded and installed from the Yahoo! Widgets site at <http://widgets.yahoo.com/download/> by clicking on “Get Started Now”.
3. Download the Xirrus widget from the Yahoo! Widgets web site at <http://widgets.yahoo.com/> and searching for Xirrus, or from the Wi-Fi Tools section of the Xirrus web site at <http://www.xirrus.com/library/wifitools.php>.
4. Uninstall any previous versions of the widget by right clicking on the widget graphic in the dock (the widget must be running), then selecting “Delete Widget”.
5. Double click on the .widget file to install.
6. Select “Use Widget” on the installation dialog that appears.
7. The widget will install directly into the dock panel on your Windows XP desktop.

## Operation

1. **Dock:** When on the Yahoo! Widgets dock, the widget displays the name of the currently connected Wi-Fi network (SSID) and signal level.



2. Desktop: Single click on the widget from the dock, or right click and select “Show Widget” to open the full widget. The widget face will open on the desktop to its expanded view with an active radar-like display of available Wi-Fi networks, plus details about your current Wi-Fi connection and adapter. Information on the widget face is divided into Adapter and Connection sections.



3. Fly Out: In expanded view, selecting “Show Details” or clicking anywhere on the radar display opens a side flyout window. More detailed information about your adapter is displayed at top. A table of Wi-Fi networks in range is listed below with the currently connected network (SSID) highlighted in orange. The Glossary tab provides definitions for Wi-Fi terms used in the widget.

Close Refresh Connect/Disconnect

1. 11a/b/g Wireless LAN Mini PCI Express Adapter

Connected to: radioTest BSSID: 00:0F:7D:03:3B:F1 Disable Adapter

Association Mode: 802.11a Association Type: Access Point

Driver Version: 4.1.102.133 MAC Address: Hon Hai Precision Ind:23:78:3C

Authentication: Open Encryption: None

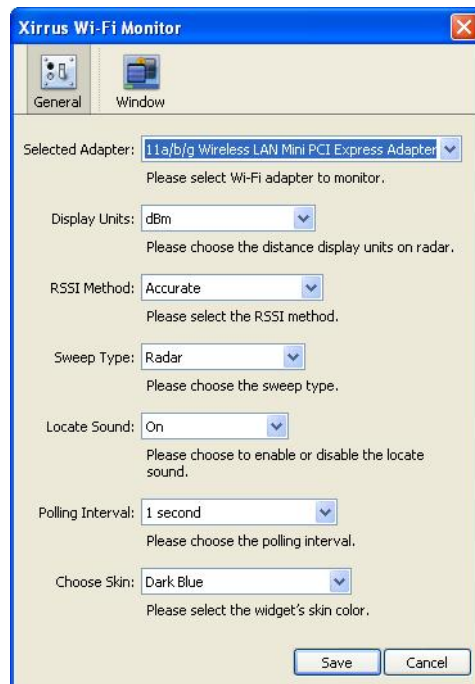
Available Networks Glossary Click on an SSID name to enter Locate mode.

SSID	Default Authentication	Default Encryption	RSSI (dBm)	Channel	Freq. (MHz)	Vendor	BSSID (MAC Address)	Network Mode	Network Type
radioTest	Open	None	-54	52	5260	Xirrus	00:0F:7D:03:3B:F1	802.11a	Access Point
CS_WPR_EX	Open	None	-38	36	5180	Xirrus	00:0F:7D:03:46:66	802.11a	Access Point
<Non-broadcasted SSID>	Open	WEP	-38	36	5180	Xirrus	00:0F:7D:03:46:62	802.11a	Access Point
<Non-broadcasted SSID>	WPA2/802.1x	AES-CCMP	-39	36	5180	Xirrus	00:0F:7D:03:46:63	802.11a	Access Point
ANY	Open	WEP	-39	44	5220	Xirrus	00:0F:7D:02:6F:91	802.11a	Access Point

4. **Locate:** Click on an SSID name in the left hand column of the flyout window to enter Locate mode for that Wi-Fi network. This mode works like a Geiger counter for helping to locate any Wi-Fi network, whether your system is connected to it or not. The SSID selected for locate mode becomes highlighted in yellow in the table. The widget face changes to display information only about that SSID, including its signal strength and an expanded history graph. A periodic audible beep provides an indication of distance to the device – the nearer it is, the faster the beeping rate.



5. **Preferences:** To change widget settings, right click on the widget face when it is in expanded mode, and select “Widget Preferences”. Available settings include:
  - Selected Adapter: Choose the Wi-Fi adapter to display information about on the main widget face (when more than one adapter is present on your system)
  - Display Units: Select units to display signal strength (RSSI), either % or dBm. A 0% signal corresponds to -100dBm. A 100% signal corresponds to -50dBm or greater.
  - RSSI Method: Select either Accurate or Classic method. The Accurate method is the default and best indication of current signal strength.
  - Sweep Type: Select either a radar or sonar style sweep animation on the radar face of the widget. The animation can also be disabled.
  - Locate Sound: Choose to either enable or disable beeping sound in Locate mode.
  - Polling Interval: Select the interval in seconds that the widget samples new Wi-Fi information. The shorter the interval, the faster the widget will update information.
  - Choose Skin: Select from 9 different color/style graphical skins for the widget.



## Tips

1. To reduce CPU utilization of the widget, increase the Polling Interval (from Preferences window) and/or select “None” for the Sweep Type on the Preferences window.
2. Clicking on the radar display opens the flyout, in addition to the “Show details” button.
3. Choose Accurate (the default) for the RSSI Method from the Preferences window for most accurate signal strength information. This information comes from the Wi-Fi adapter scanning across Wi-Fi channels. The Classical method is commonly used by many other Wi-Fi utilities and takes RSSI information from the connection itself. This information is updated less frequently than with the Accurate method.
4. Click on the column headers on the flyout table to sort by that item, especially useful if there are a lot of networks (SSIDs) in the table.
5. When there are multiple Wi-Fi adapters on the system, click on the adapter name in the fly out window to expand/contract the view of its information.
6. Detect Ad Hoc networks (a potential security threat in Wi-Fi networks) using the Network Type column in the Available Networks table on the fly out. This column will display values of either Access Point or Ad Hoc.

## Known Issues

Following are known issues with the 1.1 version of the Xirrus Wi-Fi Monitor widget:

1. In some cases, the widget may not correctly connect to your Wi-Fi adapter and display information upon installation. In this case, try uninstalling/reinstalling the widget. Alternatively, try disabling/enabling your Wi-Fi adapter, then reinstalling the widget.
2. The widget requires the Microsoft .NET 2.0 framework to operate. If the widget does not operate properly, check that you have this framework installed by going to Control Panel – Add/Remove Programs and look for Microsoft .NET 2.0. If it is not present, it can be downloaded and installed from:  
<http://www.microsoft.com/downloads/details.aspx?FamilyID=0856eacb-4362-4b0d-8edd-aab15c5e04f5&displaylang=en>
3. The widget will not run properly on systems running virtualization software such as VMware or Microsoft VirtualPC.

## **Updates**

The Xirrus Wi-Fi Monitor widget may be updated periodically with new features and fixes.

The latest widget versions are posted for free download from:

1. Xirrus website, Wi-Fi Tools page: <http://www.xirrus.com/library/wifitools.php>
2. Yahoo! Widgets site: <http://widgets.yahoo.com/> and search for "Xirrus"

## **Support/Feedback**

The Wi-Fi Monitor widget is a free tool and does not come with a guarantee of support.

However, inquiries and feedback about our widgets can be made by sending an email to [widget@xirrus.com](mailto:widget@xirrus.com).

## **Also Available**

The Xirrus Wi-Fi Monitor XP widget is also available as a Yahoo! Widget for Mac OS X and as a Windows Vista gadget. A Linux desklet version is also in development. Check the Xirrus web site for the latest available widgets and gadgets:

<http://www.xirrus.com/library/wifitools.php>